

# *Sai Residency*

1 / 2 / 3 BHK Garden + Terrace Luxurious Flats

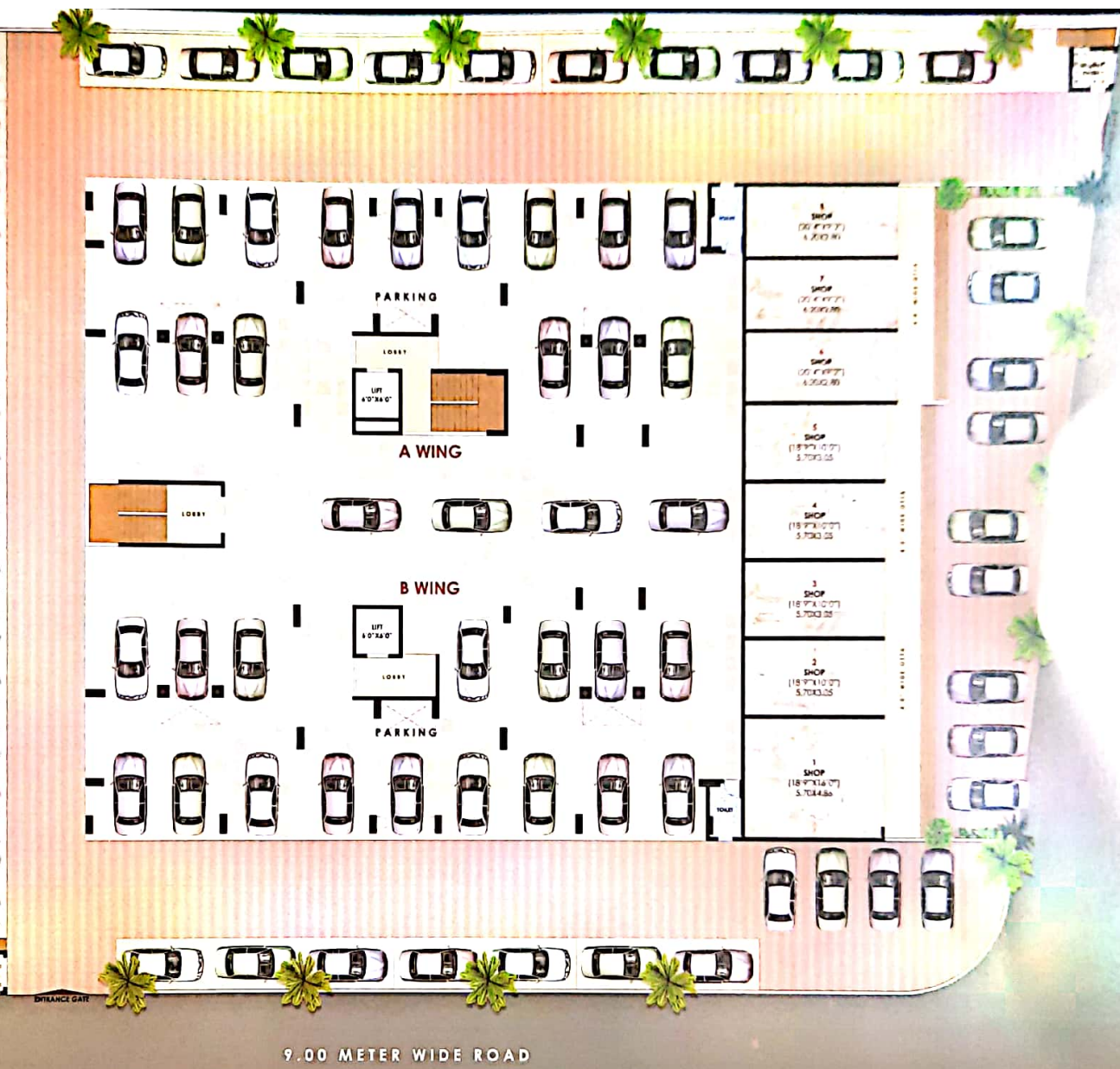
## *A privileged living with a difference*

Sai Residency Is A Concept Of Living That Has Been Designed Keeping In Mind The Aspirations Of Contemporary Living. Well - Designed Life Spaces Or Quality Of Construction, Sai Residency Brings About A Sea Change In The Very Idea Of Modern Lifestyle. Here Moments Of Life Find Their Own Spaces & Blossom Into A Vibrant Picture Of Happy & Enriched Life. So If You Believe In Living Life With A Difference, Sai Residency Is The Place To Be. Come & Add A New Dimension To Your Concept Of Ultra - Modern Life & See How Life Takes A Shape Of Masterpiece & Give You A Whole New World Of Convenience





5.00 METER WIDE ROAD



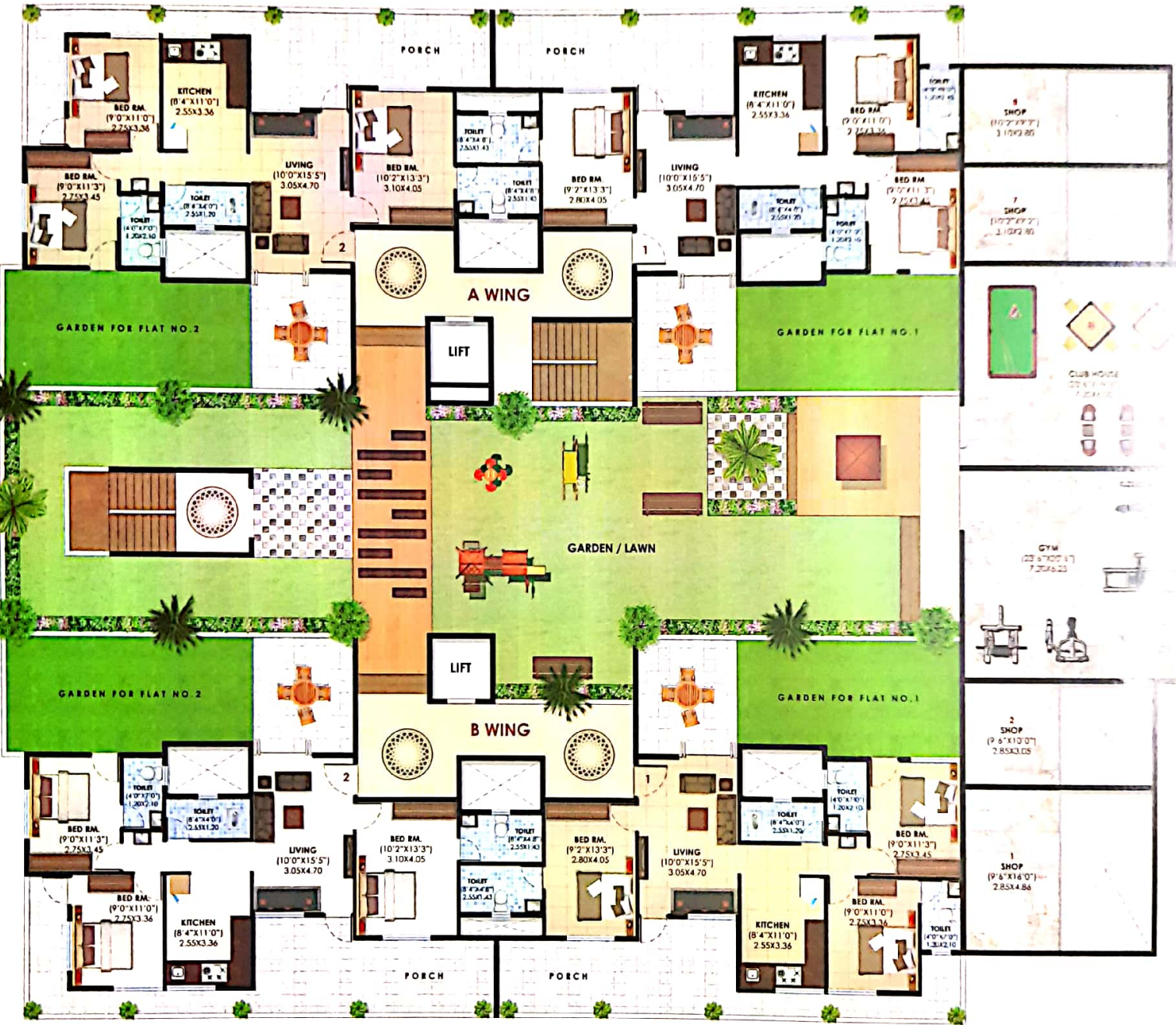
9.00 METER WIDE ROAD

Area Statement	Shop Nos 1	2	3,4,5	6	7,8
Shop Nos	1	2	3,4,5	6	7,8
Carpet Area	300.00 ( 27.87 Sq. M. )	187.50 ( 17.41 Sq. M. )	187.50 ( 17.41 Sq. M. )	187.50 ( 17.41 Sq. M. )	187.50 ( 17.41 Sq. M. )
Carpet Area Mezzanine	152.00 ( 14.12 Sq. M. )	95.00 ( 8.82 Sq. M. )	—	—	95.00 ( 8.82 Sq. M. )
Add. 40% B/U.p.	632.80 ( 58.78 Sq. M. )	395.50 ( 36.74 Sq. M. )	262.50 ( 24.38 Sq. M. )	262.50 ( 24.38 Sq. M. )	395.50 ( 36.74 Sq. M. )
Octta (50%)	32.00 ( 2.97 Sq. M. )	20.00 ( 1.85 Sq. M. )	20.00 ( 1.85 Sq. M. )	18.00 ( 1.67 Sq. M. )	18.00 ( 1.67 Sq. M. )
Saleable Area	664.80 Sq. Ft. ( 61.76 Sq. M. )	415.50 Sq. Ft. ( 38.59 Sq. M. )	282.50 Sq. Ft. ( 26.24 Sq. M. )	280.50 Sq. Ft. ( 26.05 Sq. M. )	413.50 Sq. Ft. ( 38.41 Sq. M. )

**GROUND FLOOR PLAN**



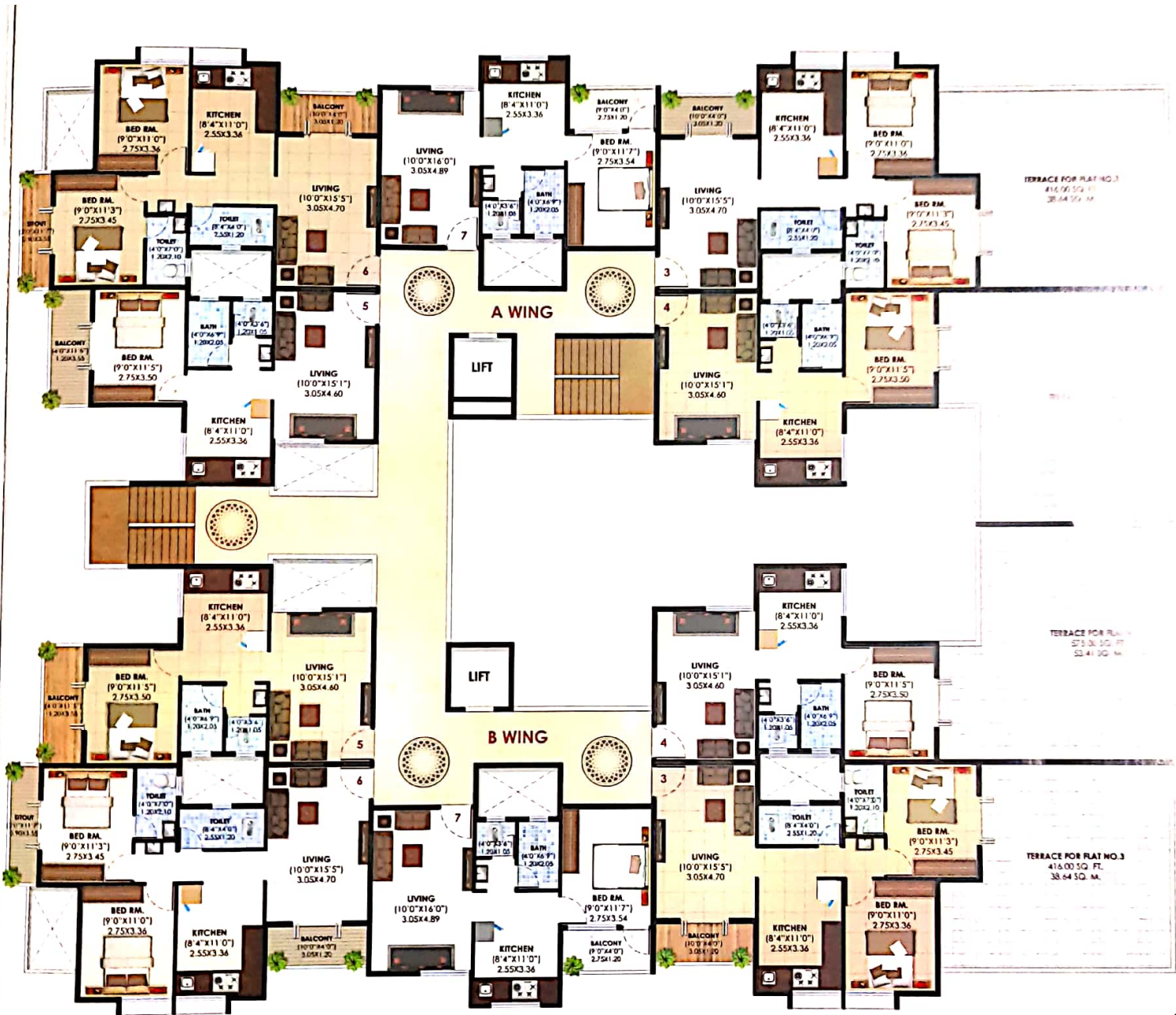




### PODIUM FLOOR PLAN

Area Statement	1	2
Flat Nos	769.40 ( 71.47 Sq. M. )	738.41 ( 68.59 Sq. M. )
Carpet Area	1038.70 ( 96.49 Sq. M. )	996.85 ( 92.60 Sq. M. )
Add. 35% B/Up	304.00 ( 28.24 Sq. M. )	339.00 ( 31.49 Sq. M. )
Garden Area 50%	50.00 ( 4.64 Sq. M. )	50.00 ( 4.64 Sq. M. )
Saleable Area	1392.70 Sq. Ft. ( 129.37 Sq. M. )	1385.85 Sq. Ft. ( 128.74 Sq. M. )

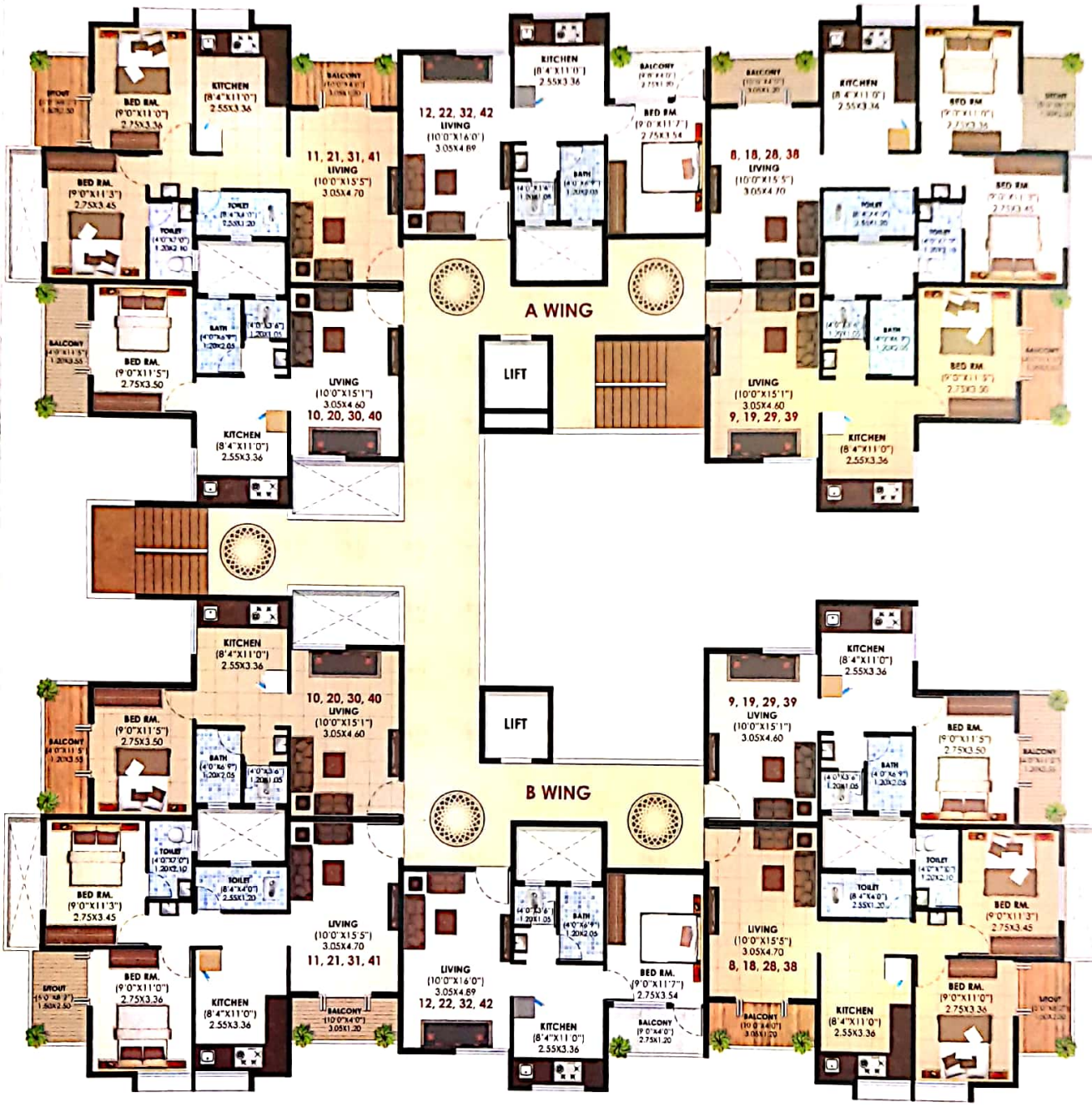




1ST FLOOR PLAN



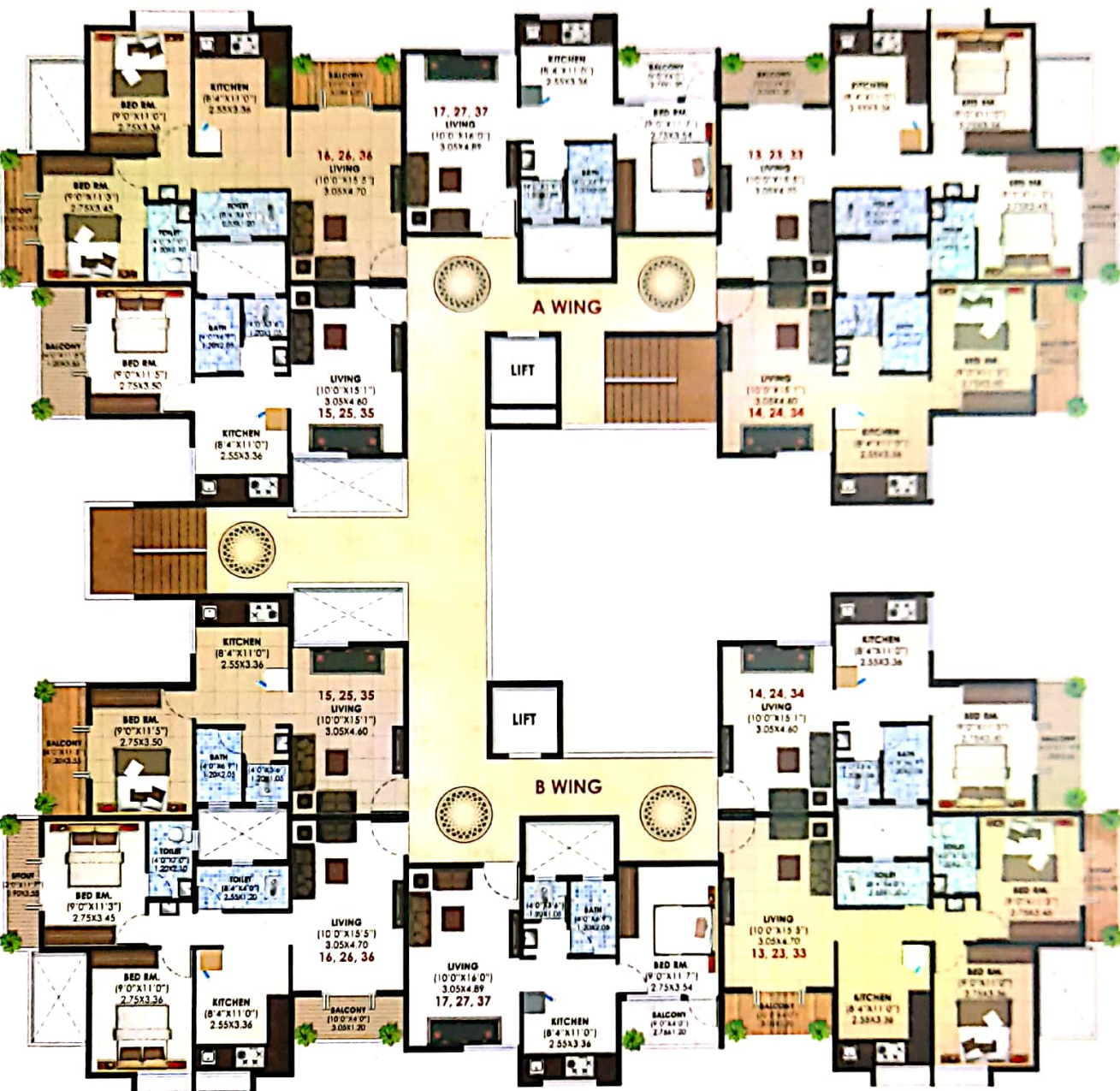
Area Statement	3	4	5	6	7
Flat Nos	3	4	5	6	7
Carpet Area	560.00 ( 52.02 Sq. M. )	409.50 ( 38.04 Sq. M. )	409.50 ( 38.04 Sq. M. )	560.00 ( 52.02 Sq. M. )	417.60 ( 38.79 Sq. M. )
Balcony / Alt. Terrace	75.00 ( 6.96 Sq. M. )	44.00 ( 4.08 Sq. M. )	44.00 ( 4.08 Sq. M. )	75.00 ( 6.96 Sq. M. )	36.00 ( 3.34 Sq. M. )
Add 35% BU/Up	857.25 ( 79.64 Sq. M. )	612.20 ( 56.87 Sq. M. )	612.20 ( 56.87 Sq. M. )	857.25 ( 79.64 Sq. M. )	612.20 ( 56.87 Sq. M. )
Open Terrace 50%	208.00 ( 19.32 Sq. M. )	287.50 ( 26.70 Sq. M. )	—	—	—
Parking	50.00 ( 4.64 Sq. M. )	50.00 ( 4.64 Sq. M. )	50.00 ( 4.64 Sq. M. )	50.00 ( 4.64 Sq. M. )	50.00 ( 4.64 Sq. M. )
Saleable Area	1115.25 Sq. Ft. ( 103.60 Sq. M. )	949.70 Sq. Ft. ( 88.22 Sq. M. )	662.20 Sq. Ft. ( 61.51 Sq. M. )	907.25 Sq. Ft. ( 84.28 Sq. M. )	662.20 Sq. Ft. ( 61.51 Sq. M. )



**2ND / 4TH / 6TH / 8TH FLOOR PLAN**

Area Statement	8, 18, 28, 38 / 11, 21, 31, 41	9, 19, 29, 39 / 10, 20, 30, 40	12, 22, 32, 42
Flat Nos	8, 18, 28, 38 / 11, 21, 31, 41	9, 19, 29, 39 / 10, 20, 30, 40	12, 22, 32, 42
Carpet Area	560.00 ( 52.02 Sq. M. )	409.50 ( 38.04 Sq. M. )	417.60 ( 38.79 Sq. M. )
Balcony / Alt. Terrace	75.00 ( 6.96 Sq. M. )	44.00 ( 4.08 Sq. M. )	36.00 ( 3.34 Sq. M. )
Add. 35% B/Up	857.25 ( 79.64 Sq. M. )	612.20 ( 56.87 Sq. M. )	612.20 ( 56.87 Sq. M. )
Parking	50.00 ( 4.64 Sq. M. )	50.00 ( 4.64 Sq. M. )	50.00 ( 4.64 Sq. M. )
Saleable Area	907.25 Sq. Ft. ( 84.28 Sq. M. )	662.20 Sq. Ft. ( 61.51 Sq. M. )	662.20 Sq. Ft. ( 61.51 Sq. M. )

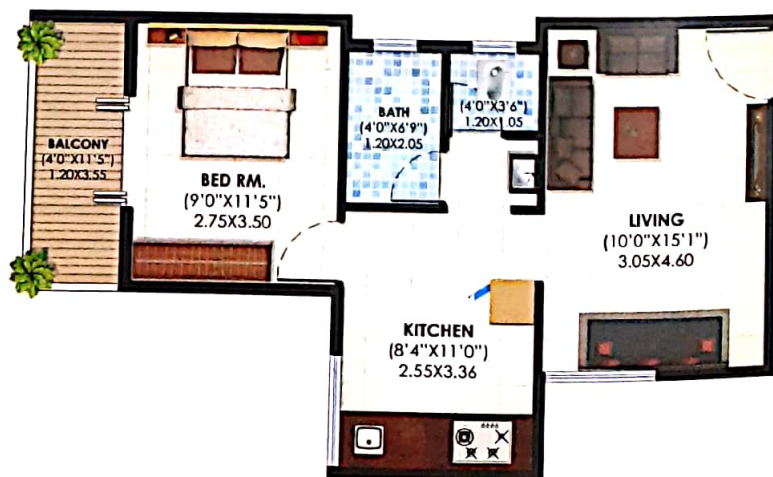




Area Statement	Flat Nos	13, 23, 33 / 18, 28, 38	14, 24, 34 / 15, 25, 35	17, 27, 37
Carpet Area		580.00 ( 52.02 Bq. M. )	408.50 ( 38.04 Bq. M. )	417.80 ( 38.78 Bq. M. )
Balcony / Alc. Terrace		75.00 ( 8.88 Bq. M. )	44.00 ( 4.08 Bq. M. )	38.00 ( 3.34 Bq. M. )
Add. 35% B/Up		857.25 ( 79.84 Bq. M. )	812.20 ( 68.87 Bq. M. )	812.20 ( 68.87 Bq. M. )
Parking		50.00 ( 4.84 Bq. M. )	50.00 ( 4.84 Bq. M. )	50.00 ( 4.84 Bq. M. )
Saleable Area		807.25 Bq. Ft. ( 84.28 Bq. M. )	882.20 Bq. Ft. ( 81.51 Bq. M. )	882.20 Bq. Ft. ( 81.51 Bq. M. )

**3RD / 5TH / 7TH  
FLOOR PLAN**





1 BHK ISOMETRIC VIEW





**2 BHK ISOMETRIC VIEW**



**3 BHK ISOMETRIC VIEW**

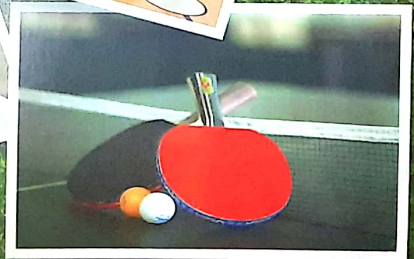






*Space that belongs to you*

There is a space that extends your being beyond the ordinary. Clubhouse Al Sai Residency is designed keeping in mind the social aspect that defines you. Personalize it. Be here to feel exclusive & cherish moments of being in your very own space. It's about celebration & sharing that give a new meaning to the essence of life. Come & redefine the very idea of socializing the way it should be. Celebrate life & be your true self.





# Specifications

## LIVING / BEDROOM

- Walls** : Gypsum Plaster With Premium Emulsion Paint With Primer Putty
- Floor** : 24" X 24" Best Quality Vitrified Nano Ceramic Tiles With Vitrified Ceramic Tiles Skirting Of 3" Height.
- Windows** : Three Track Aluminum Windows Having Powder Coating With Plain 4mm Glass & Mosquito Net.
- Electrification** : Concealed Electrical Work With Telephone & TV Points With Branded Modular Switches Power Point + One Bell Point + One Telephone Point + One TV Cable To Each Flats.

## KITCHEN

- Walls** : Neeru Plaster With Premium Emulsion Paint With Primer Putty. Full Height Glazed Tiles Dado Above Kitchen Platform.
- Floor** : 24" X 24" Premium Quality Vitrified Ceramic Tiles With Vitrified Ceramic Tiles Skirting Of 3" Height.
- Windows** : Three Track Aluminum Windows Having Powder Coating With Plain 4mm Glass & Mosquito Net With Exhaust Fan Arrangement.
- Kitchen Platform** : Cooking Platform Of 12' Length Having Premium Black Granite Top With Premium Quality Stainless Steel Sink.
- Sanitary Ware** : Wall Mount Fittings Of Reputed Brands.
- Plumbing** : Concealed Plumbing Work One C. P. Cock + One Plumbing Point For Purifier.

## TOILET / W. C. / BATH

- Walls** : Premium Quality Glazed Designer Ceramic Tiles Upto 7' Height.
- Floor** : 2' X 2' Antiskid Ceramic Tiles.
- Windows** : Aluminum Section Ventilator With Exhaust Fan Arrangement.
- Sanitary Ware** : Premium Quality Sanitary Ware.
- Plumbing** : Concealed Plumbing Work.

## General Specifications

- Earthquake Resistance R. C. C. Frame Structure.
- External Wall 6" & Internal Wall 4" Thick Brick Work.
- All Door Shutter Both Side Laminated Of Flush Door.
- All Door Frames Are Of Plywood & Toilet Door Frames Of R. C. C. Frames.
- All Balconies / Terrace Flooring Will Be Of Antiskid Ceramic Tiles.
- Common Terrace Flooring Will Be Of Choina Mosaic Finish With Brickbat Coba Water Proofing.
- Provision For Invertor Wiring In Each Flat Separate Overhead Water Tank For Each Wing.

## Security & Safety

- Gated Campus With 24 Hrs. Security Cabin.
- Power Backup For Lifts.
- Fire Fighting System.
- 2 Elevators Of 8 Person Capacity Of Branded Companies.
- Adequate Car Parking.
- Rain Water Harvesting.

## Amenities

- Club House With Indoor Game Facilities.
- Well Equipped Gym.
- Children Play Area On Podium.
- Video Door Phone.



## Location Plan

Sai Residency Is Located At One Of The Most Promising Locations In Its Neighborhood. The Place Is Well - Connected To All Places Of Strategic Importance & Gives An Easy Access To Everything That An Enriched Life Can Ask For. Be It Investment Or About Living It's The Location That Offers The Both. Be Here Go Places In Your Life.

*Sai Residency*

1 / 2 / 3 BHK Garden + Terrace Luxurious Flats

